

BRAZILIAN
INDUSTRY



PRODUCT LINE

INDUSTRIAL VALVES

WWW.INTERVALVULAS.COM.BR





EXCELLENCE IN INDUSTRIAL VALVES WITH GLOBAL REACH

Located in Ribeirão Preto – SP, one of the largest industrial hubs in the interior of São Paulo state, we are a company specialized in **the manufacturing and maintenance of industrial valves**, serving with excellence various sectors: sugar, alcohol, chemical industry, petrochemical, pulp and paper, sanitation, steelmaking, mining, pharmaceutical, and food industries.

With **our own facilities and a highly qualified team**, we combine technical experience with partnerships with certified suppliers, ensuring the correct and safe specification of valves for each application.

Our **engineering department** is focused on developing special projects, offering customized solutions according to the specific demands of each client.

We are a **100% Brazilian** company, positioned among the largest valve manufacturers in the country. We have a strong presence in the national market and also export to several countries, consolidating a growing and solid international presence.

We stand out by **pursuing continuous improvement and maximum quality**, as well as offering comprehensive technical support for the perfect operation of the products supplied. For our clients' greater peace of mind, we provide **24-hour technical assistance**.

CERTIFICATES



ISO 9001:2015



CRC PETROBRÁS



LOCAL CONTENT
CERTIFICATE



TYPE APPROVAL



FIRE SAFE
ISO 10497

TECHNICAL SUPPORT AND VALVE MAINTENANCE

Interválvulas offers complete solutions in the commercialization, maintenance, and overhaul of valves, serving sectors such as Mining, Petrochemical, Sugar and Alcohol, and Pulp and Paper. Valve maintenance is essential to ensure the efficiency of industrial processes, providing benefits such as cost savings, reduced downtime, and extended equipment lifespan. With our specialized technical team, we deliver efficient solutions and quality assurance for every maintenance service.



CONCENTRIC BUTTERFLY VALVES



SERIES	MODEL	CLASS	CONNECTION	DIAMETERS
S105 / S100	Concentric One-Piece Butterfly Valve	150 e 300	Wafer	2" a 60"
			Lug	2" a 60"
S155	Concentric Two-Piece Butterfly Valve	150	Wafer	2" a 60"
			Lug	2" a 60"

Construction Standard	API 609
Face to Face	API 609 Cat. A
Connection Standards	ASME, ISO, DIN, E JIS
Testing Standards	API 598
Body and Disc Materials	Ductile Iron, WCB, CF8, CF8M, Aluminum Bronze, and Special Alloys upon request
Sealing Materials	EPDM, Buna, Viton, Silicone, Brastec, SBR, Hypalon, PTFE



HIGH-PERFORMANCE DOUBLE ECCENTRIC BUTTERFLY VALVES

SERIES	MODEL	CLASS	CONNECTION	DIAMETERS
S250	Double Offset Butterfly Valve with Resilient Seal	150	Wafer	2" a 60"
			Lug	2" a 60"
		300	Wafer	2" a 60"
			Lug	2" a 60"
	Double Offset Butterfly Valve with Metal-to-Metal Seal	150	Wafer	2" a 60"
			Lug	2" a 60"
		300	Wafer	2" a 60"
			Lug	2" a 60"
	Double Offset Butterfly Valve with Resilient Seal	PN3	Wafer	30" a 60"
			BW	30" a 60"

Construction Standard	API 609
Face to Face	API 609 Cat. B
Connection Standards	ASME, ISO, DIN, E JIS
Testing Standards	Blockage: API 598 Control (Metal-to-Metal) ANSI FCI 70-2
Body and Disc Materials	WCB, CF8, CF8M, Aluminum Bronze, and Special Alloys available upon request
Sealing Materials	RTFE, Metal x Metal



S250 14" with AirTorque Pneumatic Actuator

TRIPLE OFFSET BUTTERFLY VALVES

FIRE SAFE

SERIES	MODEL	CLASS	CONNECTION	DIAMETERS
S300	Triple Offset Butterfly Valve with Metal-to-Metal Seal	150	Wafer	2" a 60"
			Lug	2" a 60"
			Flangeada	2" a 60"
		300	Wafer	2" a 60"
			Lug	2" a 60"
			Flangeada	2" a 60"
		600	Wafer	2" a 60"
			Lug	2" a 60"
			Flangeada	2" a 60"

Construction Standard	API 609
Face to Face	API 609 Cat. B
Connection Standards	ASME, ISO, DIN, E JIS
Testing Standards	API 598
Body and Disc Materials	WCB, CF8, CF8M, Duplex, Super Duplex, and special alloys available upon request
Sealing Materials	Metal x Metal

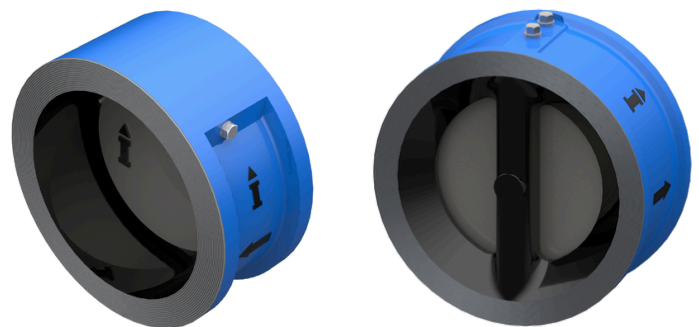


S300 12" with Gearbox Actuation

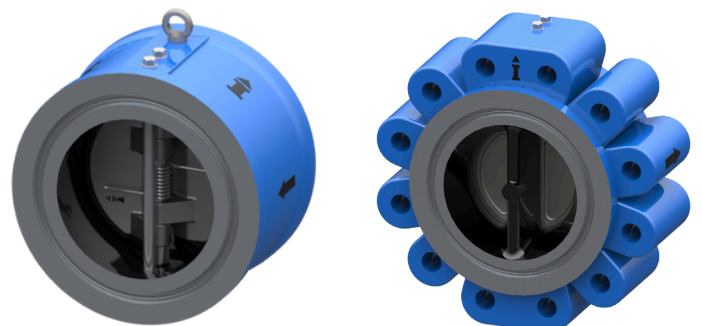
CHECK VALVES

SERIES	MODEL	CONNECTION	DIAMETERS
SINGLE FLAP S400 DOUBLE DOOR S500	150	Wafer	2" a 60"
		Lug	2" a 60"
	300	Wafer	2" a 36"
		Lug	2" a 36"
DOUBLE DOOR S500	600 / 900	Wafer	2" a 24"
		Lug	2" a 24"
	1500 / 2500	Wafer	2" a 14"
		Lug	2" a 14"

Construction Standard	API 594
Face to Face	API 594
Connection Standards	ASME, ISO, DIN, E JIS
Testing Standards	API 598
Body and Disc Materials	WCB, CF8, CF8M, Duplex, Super Duplex, and special alloys available upon request
Sealing Materials	Vulcanized Resilient, Metal-to-Metal



Wafer



Wafer

Lug

GLOBE VALVES



2-WAY GLOBE CONTROL VALVES

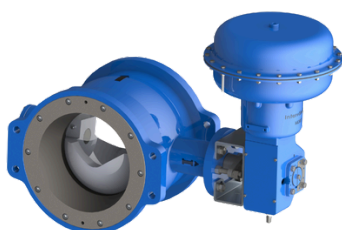


QUICK RELEASE S1200



CONTINUOUS DISCHARGE S1600

SEGMENTED V BALL VALVES



SAFETY AND RELIEF VALVES



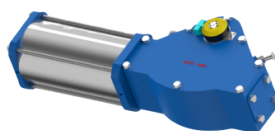
ACTUATORS



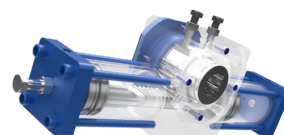
PNEUMATIC ACTUATOR



ELECTRIC ACTUATOR



SCOTCH YOKE ACTUATOR



HYDRAULIC ACTUATOR



GEARBOX



EMERGENCY GEARBOX



ACTUATION LEVER

ACESSÓRIOS



SOLENOID VALVE



MECHANICAL LIMIT SWITCH



INDUCTIVE SENSOR



FILTER REGULATOR WITH PRESSURE GAUGE



MONITORING SYSTEM



ELECTRO-PNEUMATIC POSITIONER - ROTARY / LINEAR
4-20 mA / 4-20mA Hart / ProfiBus / FieldBus



📍 Rua Romano Coró, 999 - Parque Industrial
Cep: 14075-630 - Ribeirão Preto - SP - Brasil

☎ +55 (16) 3516-7200 📞 +55 (16) 99353-1875

📷 📺 📱 @intervalvulas

WWW.INTERVALVULAS.COM.BR

